

PLEASE ENABLE JAVASCRIPT, BECAUSE YOU WON'T SEE ALL OF THE CONTENT.

## Forgot the domain admin password?

Like 7

You forgot the domain admin password? This article explains how you can reset the administrator password in a Windows Server 2008 (R2) and Windows Server 2012 (R2) domain.



By Michael Pietroforte - Thu, June 26, 2014 - 2 comments

Michael Pietroforte is the founder and editor of 4sysops. He is a Microsoft Most Valuable Professional (MVP) with more than 30 years of experience in system administration.



### Articles in this series

#### Reset Windows password

1. 12 ways how to reset the Windows administrator password – Windows 7, Vista, Windows XP
2. How to reset a Windows 8 password
3. Forgot the administrator password? The Sticky Keys trick
4. How to reset a Microsoft account password (connected account)
5. Offline enable the Windows 8 built-in administrator account
6. FREE: NTPWEdit – Reset Windows 7 password
7. Kon-Boot – The fastest way to remove a Windows password
8. FREE: Trinity Rescue Kit (TRK) – Recover Windows using Linux
9. Forgot the domain admin password?

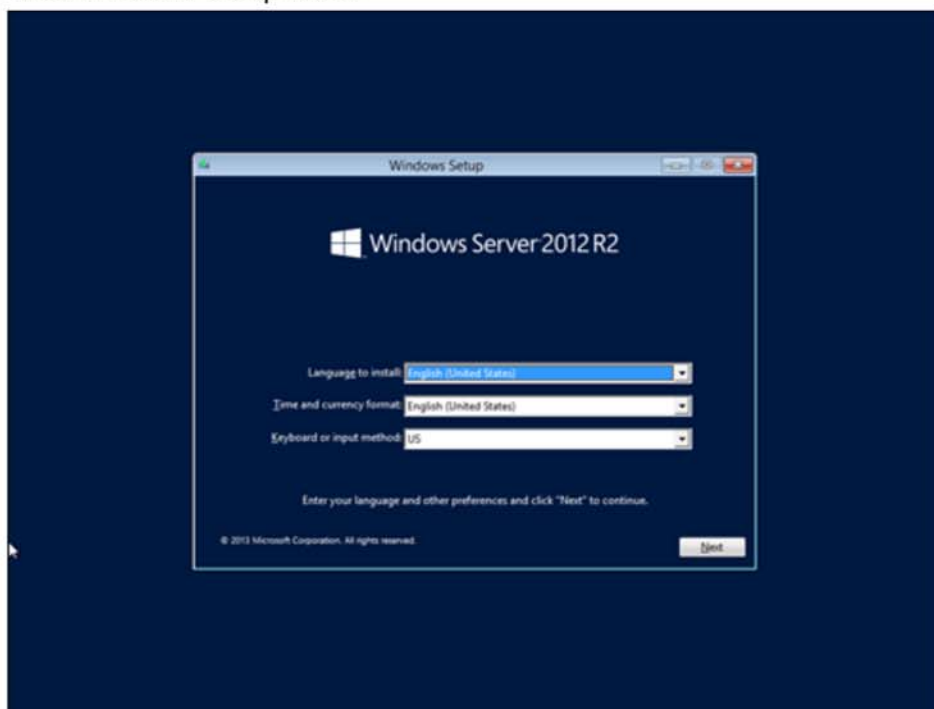
First of all, you should never work with the “Administrator” account. Each admin should have his own account, for two reasons. First, it makes troubleshooting easier if an admin messes up. Second, if one admin forgets his password, another admin can reset it through Active Directory Users and Computers (ADUC). Whenever you reset a password, however, note that the corresponding account will no longer be able to access passwords stored in Internet Explorer or files that have been encrypted with EFS.

If you forgot the domain admin password, and no other administrator exists in this Windows domain, you can use the procedure below to reset the password. Note that the screenshots are for Windows Server 2012 R2 with Update. However, this guide also works for Windows Server 2012 and Windows Server 2008 R2.

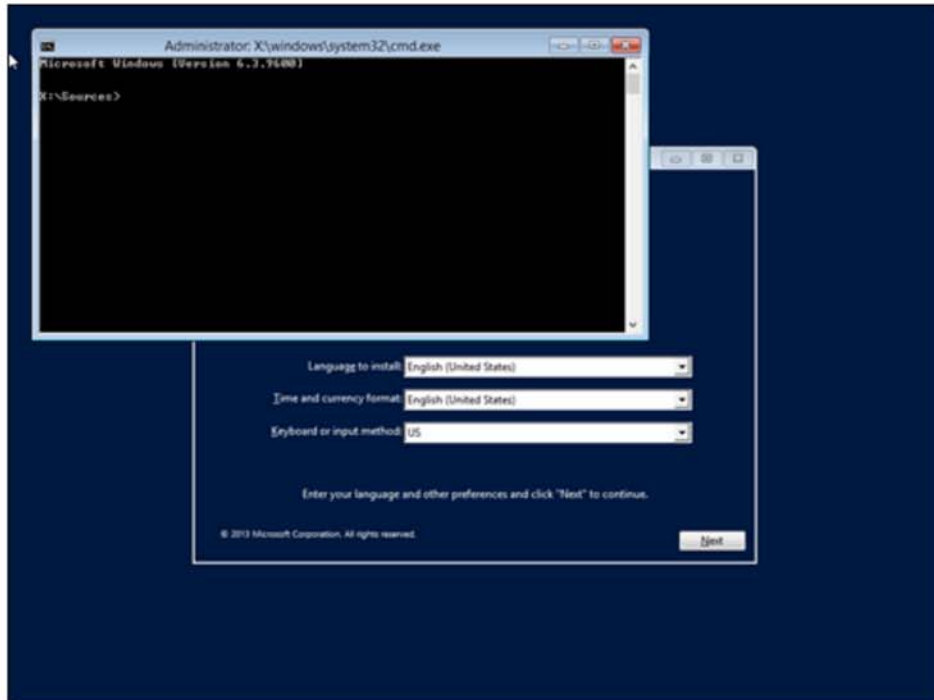
With this password reset method, you have to boot from a second Windows installation. You then have to replace utilman.exe (the Utility Manager with ease-of-use functions such as the Narrator and Magnifier)

then reset the password. Here is the step-by-step guide:

1. Boot from a Windows Server 2012 R2 DVD (or ISO file in a virtual environment) and click **Next** when Windows Setup loads.



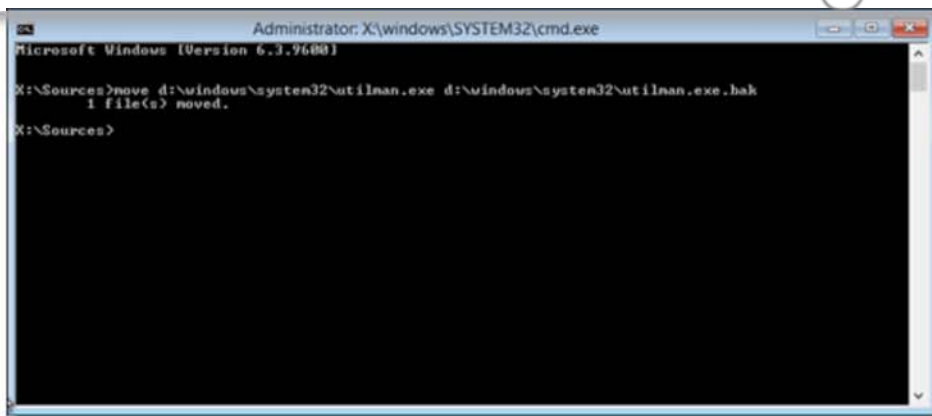
2. Press **SHIFT + F10** to open a command prompt.



3. At the command prompt, enter:

```
1 move d:\windows\system32\utilman.exe d:\windows\system32\utilman.exe.bak
```

**Note:** On Windows Server 2008 R2, you will most likely have to replace the drive letter d: with c:. If



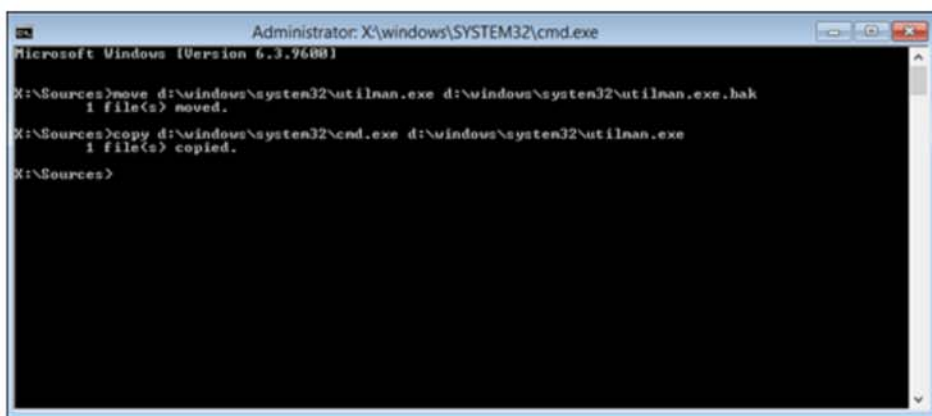
```
Administrator: X:\windows\SYSTEM32\cmd.exe
Microsoft Windows [Version 6.3.9600]

X:\Sources>move d:\windows\system32\utilman.exe d:\windows\system32\utilman.exe.bak
1 file(s) moved.

X:\Sources>
```

4. Replace utilman.exe with cmd.exe:

```
1 copy d:\windows\system32\cmd.exe d:\windows\system32\utilman.exe
```



```
Administrator: X:\windows\SYSTEM32\cmd.exe
Microsoft Windows [Version 6.3.9600]

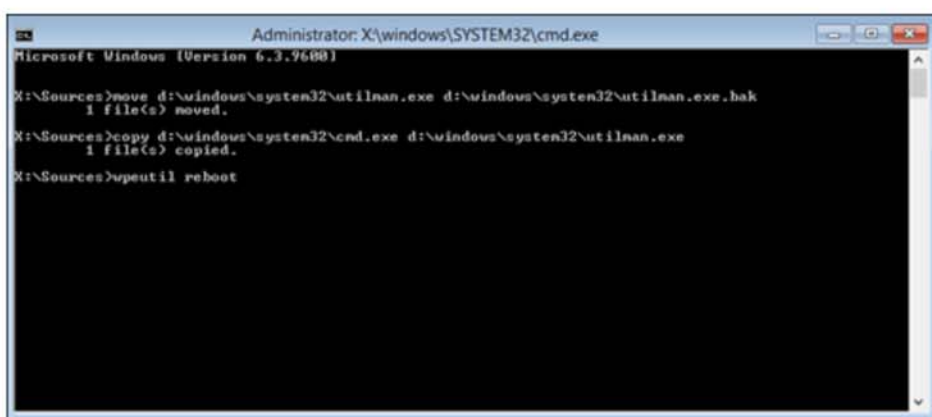
X:\Sources>move d:\windows\system32\utilman.exe d:\windows\system32\utilman.exe.bak
1 file(s) moved.

X:\Sources>copy d:\windows\system32\cmd.exe d:\windows\system32\utilman.exe
1 file(s) copied.

X:\Sources>
```

5. Remove the boot media from the server and tell Windows PE to reboot:

```
1 wpeutil reboot
```



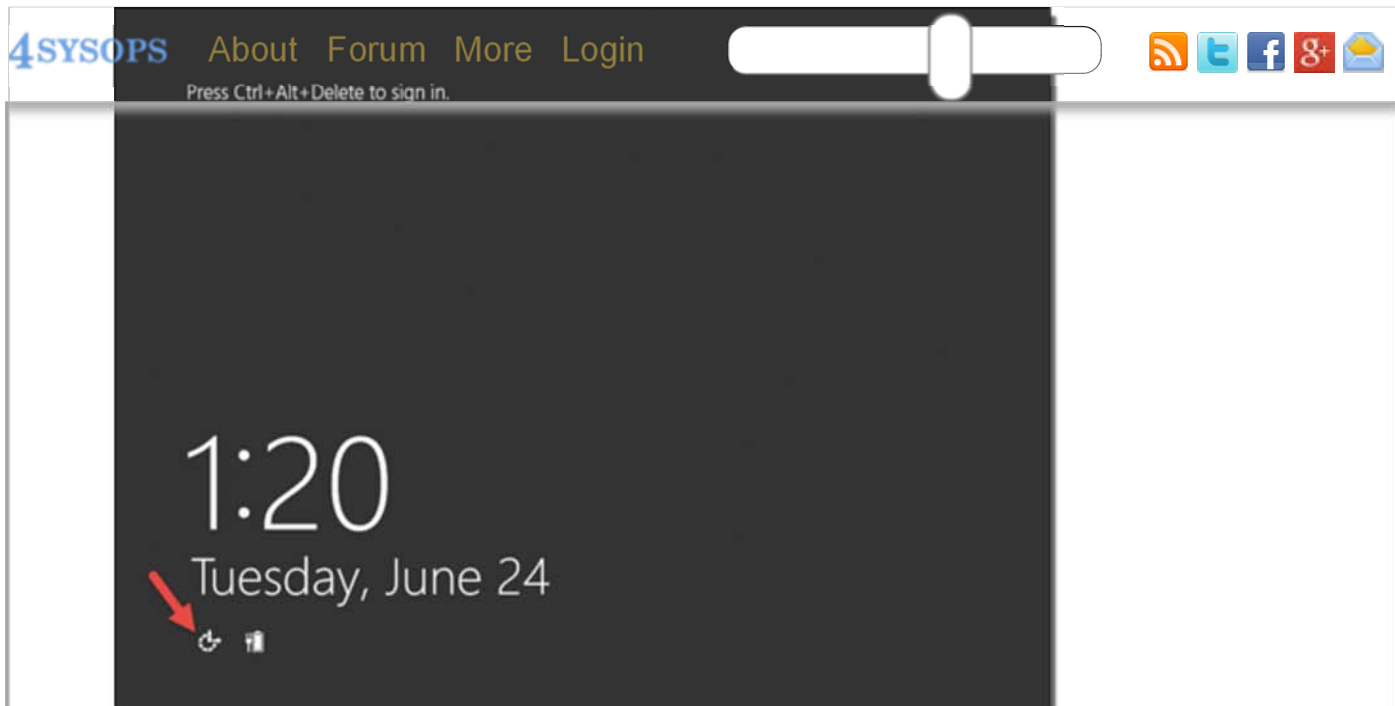
```
Administrator: X:\windows\SYSTEM32\cmd.exe
Microsoft Windows [Version 6.3.9600]

X:\Sources>move d:\windows\system32\utilman.exe d:\windows\system32\utilman.exe.bak
1 file(s) moved.

X:\Sources>copy d:\windows\system32\cmd.exe d:\windows\system32\utilman.exe
1 file(s) copied.

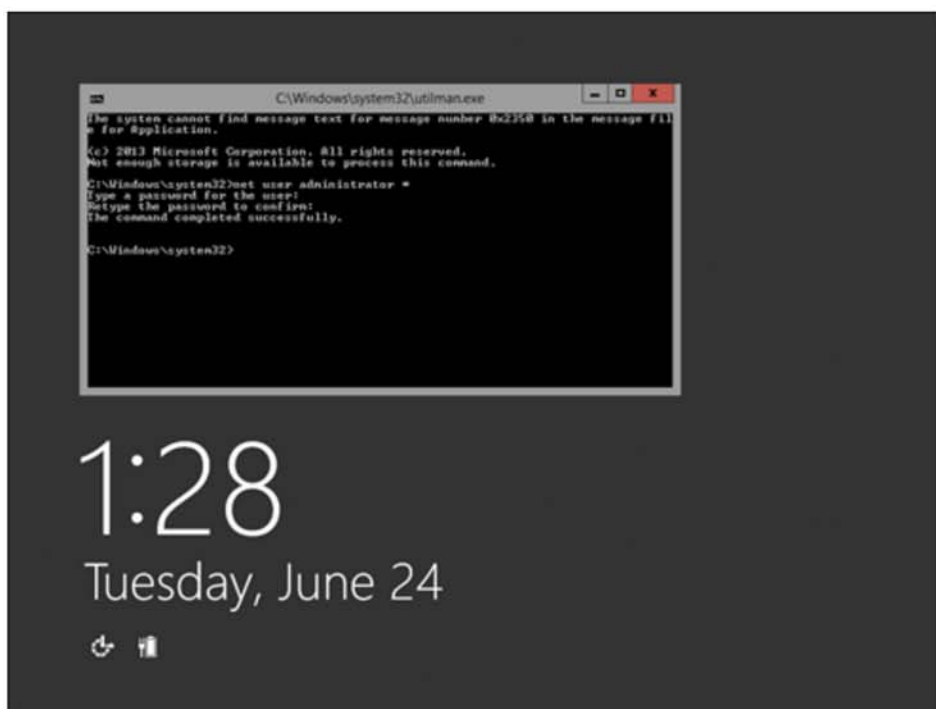
X:\Sources>wpeutil reboot
```

6. Once your domain controller is running again, click the Utility Manager icon.



7. At the command prompt that (I hope) opened, reset the domain admin password with this command:

```
1 net user administrator *
```



8. You can now close the command prompt and log on with the new password. However, mainly for security reasons, I highly recommend restoring the original utilman.exe. For this, you have to again boot Windows Server setup, follow steps 1-2, and then enter:

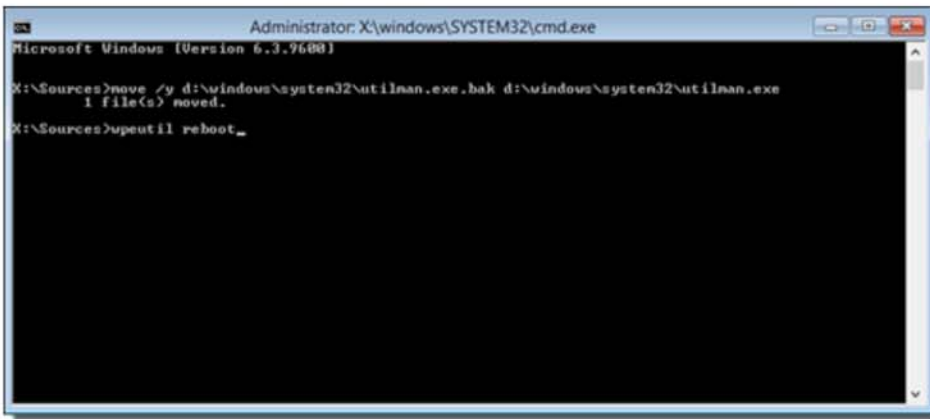
```
1 move /y d:\windows\system32\utilman.exe.bak d:\windows\system32\utilman.exe
```

(Replace the drive letter if Windows isn't installed on the d:)



9. After you removed the boot media, you can reboot the server again with

```
1 wpeutil reboot
```



Obviously, this procedure can be used by anyone who has physical access to your servers. In my next post I will give you a few tips how you can prevent the Utilman.exe password reset trick.

Series Navigation

[FREE: Trinity Rescue Kit \(TRK\) – Recover Windows using Linux -](#)

- Rate this post

Like 7

**Your question wasn't answered? Ask in the new 4sysops forum!**

## 2 Comments- [Leave a Reply](#)

**Andrew Hilborne** says:

June 26, 2014 at 12:39 pm

Or you can use NTPassword <http://pogostick.net/~pnh/ntpsswd/>



**Michael Pietroforte** says:



[4SYSOPS](#) [About](#) [Forum](#) [More](#) [Login](#)

Andrew, thanks for the tip. I am currently playing with the tool to see if it still works with Windows 8.1. However, I think you can't use ntpasswd to reset a domain admin password because it only allows your to manipulate the SAM database.

===Leave a Comment===

**PLEASE ENABLE JAVASCRIPT, BECAUSE YOU WON'T SEE ALL OF THE CONTENT.**

[Previous post](#)

## Login

Username

Password

Remember Me

[Lost your password?](#)

| [Back to Login](#)